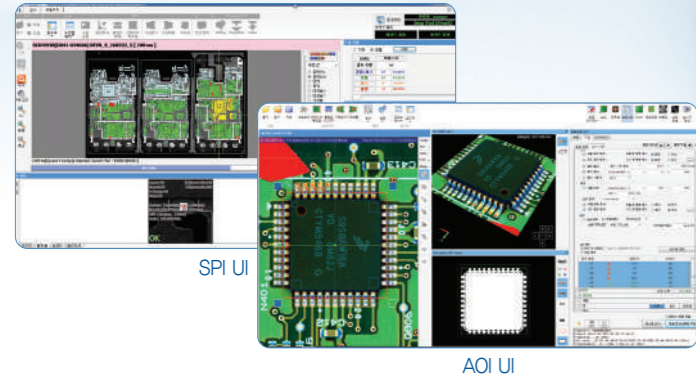


Easy Software

Friendly UI

- AOI与现有SPI使用相同界面
- 根据不同使用者，制定个性化界面
- 简单直观的操作方法



Veriworks

- 实时侦测、分析2D/3D影像
- 提供横切面profile分析工具
- Barcode Scan 可实现不良履历查询



SPC

- 提供实用的统计分析数据
- 可快速了解、分析贴片制程状况
- 提供多样的计数型、计量型统计（不良类型、基板板弯涨缩、元件类别等）



xNet

- 运用AOI及SPI设备2D/3D影像，进行不良元件分析
- 所有任务均可在浏览器中运行（PC & 移动APP）
- 一台显示器可监测所有设备状态
- 依登录权限，管理检查程序
- SPI & AOI S/W Version 自动管理
- SPC统计分析
- 元件库管理



Specifications

Model	Xceed	Xceed L	Xceed XL	Xceed XXL	Xceed Dual	Xceed Duo	Xceed DSI
Vision Module : TRSC-I							
Measuring Principle	Shadow Free Dual Laser Optical Triangulation						
Camera	4M Image Sensor / Telecentric Lens						
Illumination	R.G.B LED 3 Stage Lightings						
Scan Speed (sq.cm/sec)	65						
X-Y Resolution (µm)	14 x 14						
Scan Path Width (mm)	32						
Height Resolution (µm)	0.4						
Performance							
Height Repeatability	[Less than 3mm : 3µm @ 3σ Limit] / [Higher than 3mm : 6µm @ 3σ Limit], on a certification target						
Height Accuracy	[Less than 3mm : 3µm @ 3σ Limit] / [Higher than 3mm : 25µm @ 3σ Limit], on a certification target						
Measurement							
Inspection Type	Dimension, Missing, Misalignment(X/Y Rotation), Wrong(Body), Side Mount, Tombstone, Text(OCV/OCR), Wrong(Matching), Solder Joint, Lead Lift, Lead Missing, Lead Offset, Bridge, Color Band, Pin, Pressfit, Coplanarity, etc.						
PCB Warpage (mm)	±5 (2%)						
Max. Component Height (mm)	40 (Option 60)						
Panel Dimension							
Min. Size (mm)	50 x 50						
Max. Size (mm)	410 x 350 (3 Stage Conveyor Option 410 x 350)	510 x 510	900 x 610	1,200 x 450	410 x 320 (3 Stage Conveyor Option 410 x 320)	350 x 250	420 x 350
Thickness (mm)	0.4 - 5	0.4 - 5	0.4 - 10	0.4 - 10	0.4 - 5	0.4 - 5	0.4 - 3
Max. Weight (kg)	2	4	6	6	2	2	3
Top/Bottom Edge Clearance (mm)	2.5 / 3.3	2.5 / 3.3	2.5 / 4	2.5 / 4	2.5 / 3.3	2.5 / 3.3	3 / 3
Top/Bottom Clearance (mm)	40 / 50	40 / 50	40 / 50	40 / 50	40 / 30	40 / 20	40 / 40
System Dimension							
W x D x H (mm)	850 x 1,205 x 1,525 (3 Stage Conveyor Option : 1,310 x 1,205 x 1,525)	950 x 1,365 x 1,525	1,400 x 1,540 x 1,525	1,720 x 1,350 x 1,525	850 x 1,580 x 1,510 (3 Stage Conveyor Option : 1,450 x 1,645 x 1,510)	1,210 x 1,212 x 1,510 (1stst) 1,210 x 2,434 x 1,510 (2ndst)	1,610 x 1,365 x 1,525
Weight (kg)	730	820	930	1,140	760	800 (1stst)	800
Conveyor Height (mm)	860 - 970						
Conveyor Speed Range (mm/sec)	300 - 1,000						
Panel Flow Direction	Left to Right, Right to Left (Factory Setting)						
Conveyor Width Adjusting	Auto						
Computer & Console							
CPU	i9 Series						
Operating System	Windows 10						
Display	24" LED Monitor						
Certification	CE						
Utility Power	AC 220V(±10%), 1Φ, 50/60Hz						
Utility Air	5 kgf/sq.cm, 15 L/min, 10ø						
Software							
Inspection Program	AOIworks						
Teaching Program	ePM (Gerber, BOM, CAD)						
Verification Program	Veriworks						
MES	xNetAgent						
SPC & Process Monitoring	SPCworksAOI, xNetHub						
System Diagnosis	AOIManager, AOIManager						
Barcode(1D/2D) Recognition	Built in AOIworks						
(Option) Offline Teaching Program	AOIworks Offline						

※本目录所收录的资源及产品式样，为了提高品质有可能会在未声明的情况下变更。

Rev.4



PARMI Co., Ltd.
 HQ : 32-18, Yuseong-daero 1596beon-gil, Yuseong-gu, Daejeon, Republic of Korea Tel : +82-42-478-9900

PARMI Japan (Tokyo)
 River gate South wing 2F, 36-2, Nihonbashihakozaki-cho, Chuo-ku, Tokyo, Japan
 Tel : +81-3-6264-8744

PARMI USA Inc. West (San Diego)
 9853 Pacific Heights Blvd, Ste N, San Diego, CA 92121, U.S.A.
 Tel : +1-858-683-0225

PARMI China (Dongguan)
 广东省东莞市长安镇翠怡路怡翠豪园9-122
 Tel : +86-769-8150-1199

PARMI USA Inc. East (Boston)
 3 Avenue D, Unit A, Hopkinton, MA 01748, U.S.A.
 Tel : +1-508-485-8120

PARMI East China (Suzhou)
 苏州市工业园区通园路228号富茂机械4号楼101室
 Tel : +86-512-6280-5996

PARMI Europe GmbH (Germany)
 Siemensstraße 14, 63263 Neu-Isenburg, Germany
 Tel : +49-6102-799-098-0

www.parmi.com



3D Automatic Optical Inspection



PARMI
 Pattern Recognition & Machine Intelligence

Xceed

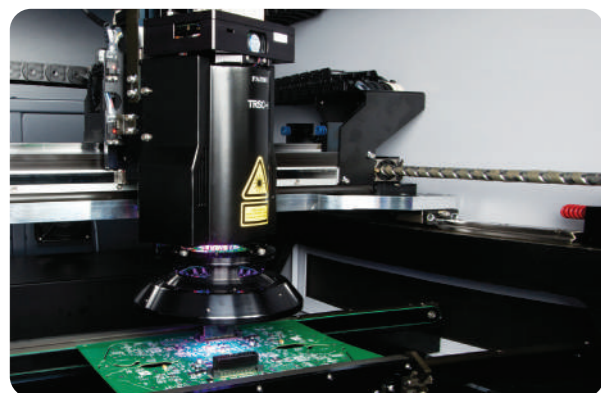
New Generation 3D AOI



High Accuracy & High Speed

3D AOI 激光模组 (TRSC-I)

- 双镭射投影技术, 4mega pixel高速CMOS镜头
- RGB LED 光源
- 超轻镜头模组 (3.8kg), 体积小巧
- 易校准易维护

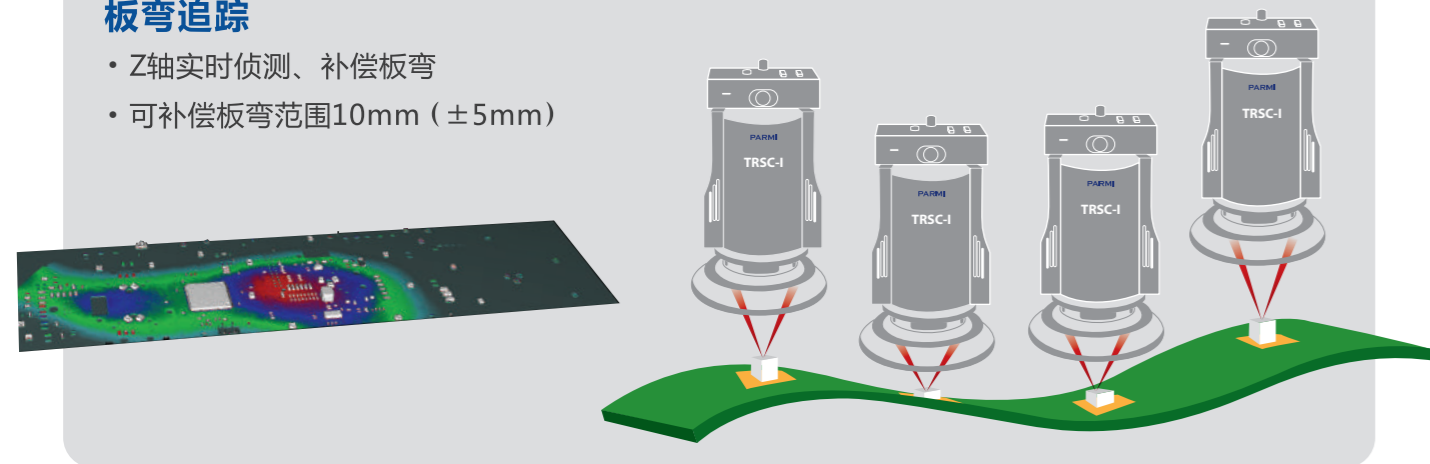


线性激光扫描方式

- 使用镭射线性扫描, 确保量测精度
- 运用线性马达, 检测动作顺畅、无震动
- 一次性扫描获得2D/3D影像
- 行业最快检测速度: 65cm/sec @ 14 x 14μm
- 检查时间: 以PCB Size 260mm(L) x 200mm(W) 为例, 检查时间 10sec (包含进出板)

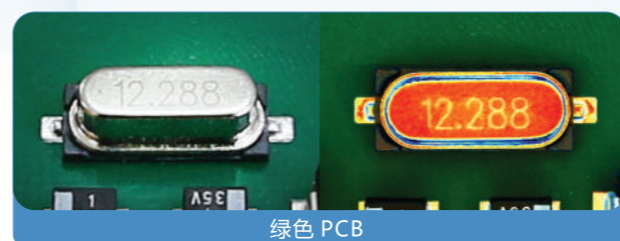
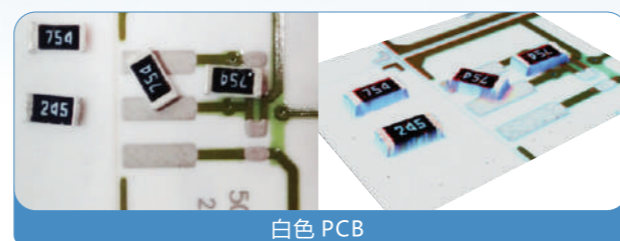
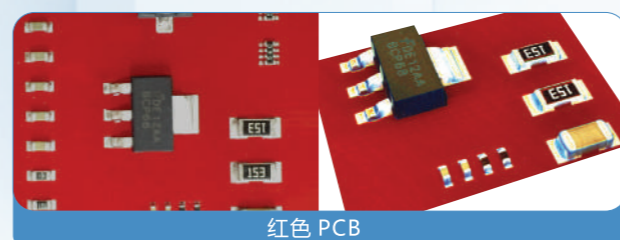
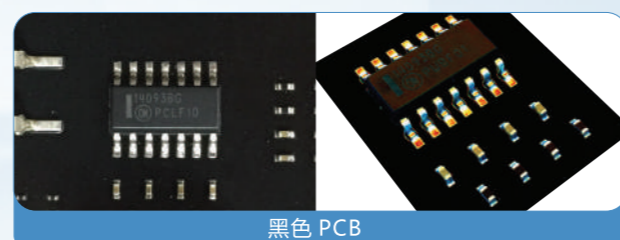
板弯追踪

- Z轴实时侦测、补偿板弯
- 可补偿板弯范围10mm (±5mm)



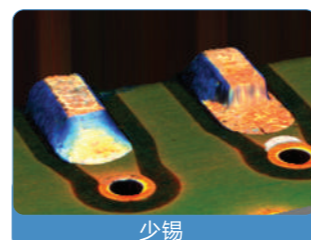
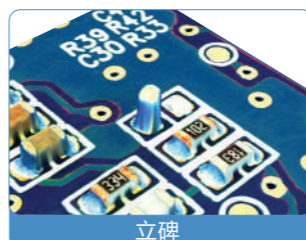
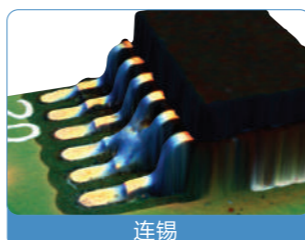
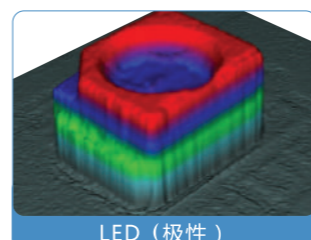
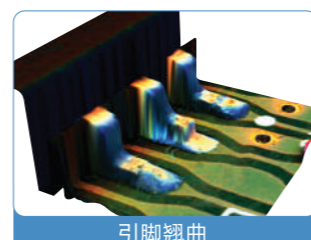
Smart Inspection

检测不受PCB 材质, 表面及颜色影响



真实的3D影像

- 呈现无杂质清晰的3D影像
- 所有不良类型完美检出



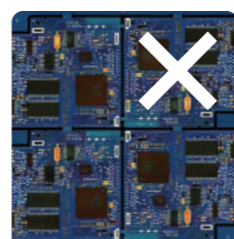
消除阴影效果

- 使用高角度双镭射线性扫描
- 最大限度的降低高元件阴影干扰



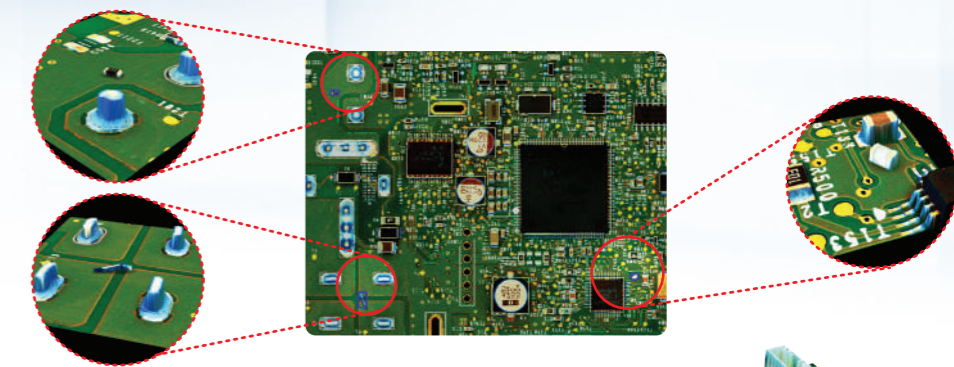
Barcode & Badmark 扫描识别

- 检测的同时进行Barcode、Badmark识别, 提高生产效率。(可识别1D, 2D, QR 等镭雕或印刷Barcode)



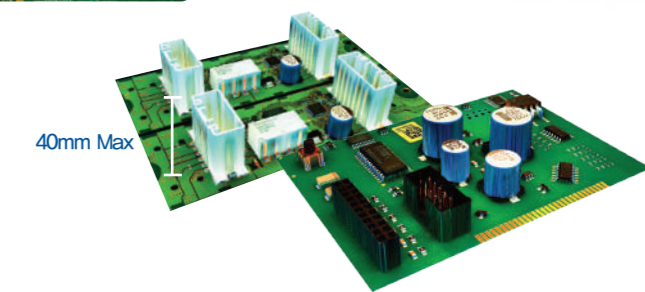
异物、飞料检查方案

- 执行2D/3D结合的完美检测
- 整板的异物检测 (Chip, Solder Ball以及其他异物的完美检出)
- 无需多余的编程, 不增加检查时间



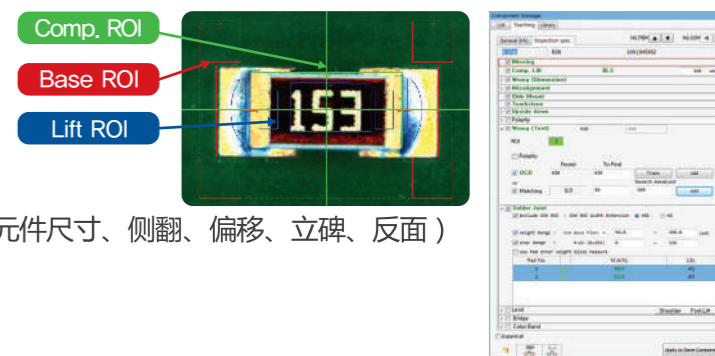
元件可测高度最高40mm

- Multi-scan方式, 执行最高40mm的检查
- 3D检测行业最高水平



使用者便利性

- 简便快捷的编程
 - 不需要针对不同颜色元件 (比如红色、黑色元件) 进行照明设定
 - 同一元件类型, 可实现一键编程
 - 自动生成基本检查项目 (缺件、引脚翘曲、元件尺寸、侧翻、偏移、立碑、反面)
 - 元件数: 588点
 - 编程及调试时间: 70分钟以内
- 没有Gerber文件的情况下也可进行程序编辑
- 直通率可达95%以上



Trough Hole Technology 工艺 (Press Fit, Connector Pin, Wave Solder)

- SMT元件以外, Press Fit检查 (Pin缺失、Pin高度、Pin偏位)
- Wave Soldering检查 (缺锡、少锡、连锡、异物等)

